

# CONNECTION POINT

MAY 2018

CONNECT, ALIGN, LIVE

WE ARE COMMITTED TO FOLLOWING GOD TOGETHER  
CONNECTED WITH HIM, COMMITTED TO EACH OTHER  
AND PARTICIPATING IN HIS LIFE TOGETHER

## Links

[Website](#)

[Facebook](#)

[Soulfire Student Ministry  
Facebook](#)

[Sunday Messages](#)

## In This Issue

[Something to  
Share?](#)..... page 1

[Events](#)..... page 2&3

[Calendar](#)..... page 4

## Something to share?

Do you have something to share with the rest of us? An announcement, an invitation, a story. Etc? Or maybe an event you want to make happen? Let me share with you on how to best make it happen!

**The Connection Point** - This is PCF's monthly newsletter. If you have a story to share, an event to invite people to or a group to invite others into; this is your method! Items for the Connection Point should be submitted for review a week before the end of a month for the next months newsletter via email to the church office.

**Email Chain** - Do you need a reminder sent out about something coming up? This is a great method. Email chain reminders need to be submitted for review to the office and will only be sent out on days the office is open. See hours below.

**Prayer Email Chain** - Do you have a prayer request? Email your request to the office, contact the office during office hours or contact one of the Pastors and your request will be sent out as soon as possible.

**Announcements** - If you have something you would like announced during church service please contact the office with the details via phone or email by the Thursday of that week.

**Bulletin** - If you would like something placed in the weekly bulletin, items need to be submitted by 10am Wednesday morning to the church office via phone or email for review.

**Events and Building Use**- Do you want to use PCF to have an event? Or do you want to organize an event for others to attend? For PCF use you must complete an Internal Room Use Form Request and submit it to the office. The office will verify there aren't any conflicts and assist you in making your event happen (Connection Point, Email Chain, advertising if needed, etc.). For outside events submit a Room Use Form Request for review and the office can assist you in communication through the above appropriate methods!

Keep your communication clear and concise! Questions? Contact the office.

**Church email:** [office@welcometopcf.org](mailto:office@welcometopcf.org)

**Pastor emails:** [kmach@welcometopcf.org](mailto:kmach@welcometopcf.org) or [cwilder@welcometopcf.org](mailto:cwilder@welcometopcf.org)

**Office Hours:** Monday, Wednesday and Thursday from 9:30am-2:30pm, Tuesday by appointment only



Peninsula Christian Fellowship  
253-851-9972

[3114 45th St Ct NW, Gig Harbor WA 98335](http://3114.45th.St.Ct.NW.Gig.Harbor.WA.98335)  
[www.welcometopcf.org](http://www.welcometopcf.org)

# CONNECTION POINT

MAY 2018

CONNECT, ALIGN, LIVE

*Sollevato per Gesù*  
Raise it up for Jesus

## HOSANNA CHRISTIAN SCHOOL AUCTION FUNDRAISER

SATURDAY, MAY 12, 2018

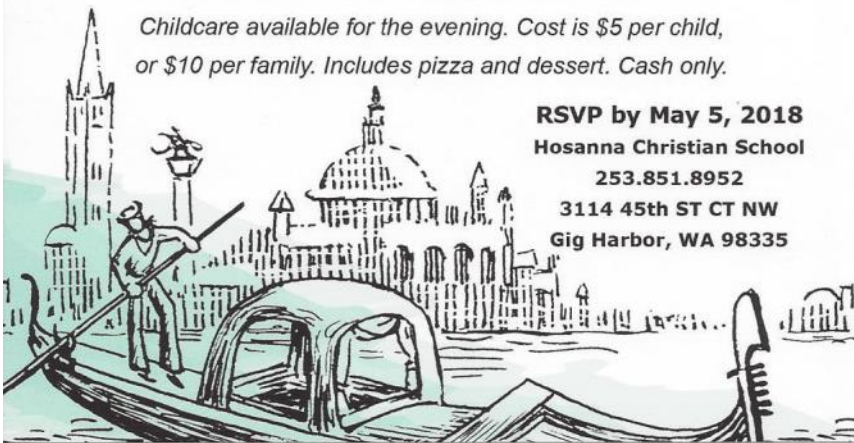
Doors open at 5 p.m., dinner served  
Auction begins at 6 P.M.

PROCEEDS TO BENEFIT  
HOSANNA CHRISTIAN SCHOOL

*Unable to attend? Please consider  
a tax-deductible donation. Contact Hosanna  
Christian School for more information.*

*Childcare available for the evening. Cost is \$5 per child,  
or \$10 per family. Includes pizza and dessert. Cash only.*

**RSVP by May 5, 2018**  
Hosanna Christian School  
253.851.8952  
3114 45th ST CT NW  
Gig Harbor, WA 98335



**Sorry WE'RE  
CLOSED**

The church office will be closed  
Monday May 28th in observance of  
Memorial Day.  
Enjoy your holiday weekend.

**Sorry WE'RE  
CLOSED**



The Pavilion Gig Harbor is  
a multi-congregational worship gathering  
focused on ministering to the Lord Jesus and speaking  
blessing in His Name over our city and region.  
The next Pavilion Gatherings are:

May 5th at 6:30 PM, meeting at  
The Gig Harbor Yacht Club, 8209 Stinson Avenue.  
Mark and Bridget Moses will lead us into  
the Presence of the Lord in worship.

May 19th at 6:30pm, meeting at  
Peninsula Christian Fellowship Student Building,  
3114 45th St Ct NW.

Childcare is provided for these gatherings.  
For more information go to  
[www.thepaviliongigharbor.org](http://www.thepaviliongigharbor.org)  
OR

on Facebook at [www.facebook.com/thepaviliongh](http://www.facebook.com/thepaviliongh)



**Skirt/Dress Making  
in the Student Building**  
Friday June 8th 5-9pm and  
Saturday June 9th  
9am-2pm.

Come and join for the last push to complete  
the skirts and dresses. No skills required!  
Contact Laura Lease for further details and/or  
questions: 253-265-2004

Another way to help is to donate gallon size  
ziplock bags. Laura will be collecting bags now  
through the June dates.

Peninsula Christian Fellowship  
253-851-9972

[3114 45th St Ct NW, Gig Harbor WA 98335](http://311445thStCtNW.GigHarborWA98335)  
[www.welcometopcf.org](http://www.welcometopcf.org)

# CONNECTION POINT

MAY 2018

CONNECT, ALIGN, LIVE

## Women's Prayer Group

Join other women of PCF in prayer 6:30-8pm on the first and third Monday nights of every month.



The group meets at Diane's home.

Contact Diane Smith

(253-970-1568) for additional information.

# SOULFIRE

Youth Group is at Charles and April Wilder's home (503 SW Hipkins Ct, Port Orchard, 98367) from 5-6:30pm life group style. We will have a meal the first week of every month and snacks on the other weeks. No Youth Group on Easter. Contact Charles with questions 360-621-5991.

No Soulfire on May 13 and 27

In observance of Mother's Day and Memorial Day.

## WOMENS' BRUNCH

♪ It's May! It's May! The Lovely Month of May!! ♪

Let's Celebrate our SisterShip in Jesus!!

All Women (7 and up) are invited to our Sister Celebration Saturday, May 19th in the SMB at 11:00 till 1:30

Feel free to invite someone!

If you have a special song or a special word that you would like to share with us please let us know by May 5th or so. Especially important if you need some accommodations for music!

We would love that!

It's Pot Luck Lunchy-Brunchy so bring what you want to share!!

Questions or Concerns:

Call Diane Smith (253) 970-1568, Wendy Pierson (253) 514-1082, Cindy Delzer (253) 473-7159, Laura Lease (253) 265-2004

May God Bless You and We will see you soon!

Church Work parties are back and we could use your help!

There are always plenty of things to do around the building! Our work parties are a great opportunity to fellowship amongst ourselves. Fellowship is happening so join us Saturday May 19th.

Starts at 8am and goes until about 11am. Bring gloves and come help make our building look its best.








If you are not available to come on our normal scheduled work days, please feel free to contact the office regarding a project that may better fit your schedule.

Peninsula Christian Fellowship  
253-851-9972

[3114 45th St Ct NW, Gig Harbor WA 98335](http://3114.45th.St.Ct.NW.Gig.Harbor.WA.98335)  
[www.welcometopcf.org](http://www.welcometopcf.org)

# May 2018

**Sunday      Monday      Tuesday      Wednesday      Thursday      Friday      Saturday**

		1 PCF Office by Appt	2 <b>Life Groups</b>	3 <b>Life Groups</b>  6pm <i>Thrive!</i>  	4 PCF Office Closed	5
6 10am Worship 5-6:30pm Soulfire	7 <b>Life Groups</b>  630pm Women's Prayer Group	8 PCF Office by Appt	9 <b>Life Groups</b>	10 <b>Life Groups</b>  6pm <i>Thrive!</i>	11 PCF Office Closed	12 5pm HCS Auction
13 10am Worship No Soulfire  	14 <b>Life Groups</b>	15 PCF Office by Appt	16 <b>Life Groups</b>	17 <b>Life Groups</b>  6pm <i>Thrive!</i>	18 PCF Office Closed	19 8-11am Work Party   11am Women's Brunch 
20 10am Worship 5-6:30pm Soulfire	21 <b>Life Groups</b>  630pm Women's Prayer Group	22 PCF Office by Appt	23 <b>Life Groups</b>	24 <b>Life Groups</b>  6pm <i>Thrive!</i>	25 PCF Office Closed	26
27 10am Worship No Soulfire  	28 PCF Office Closed <b>Life Groups</b>	29 PCF Office by Appt	30 <b>Life Groups</b>	31 <b>Life Groups</b>  6pm <i>Thrive!</i>		

**Gig Harbor**  
Mondays 6-8:30pm  
Leaders: Dennis and Aileen Amico  
**Key Peninsula**  
Wednesdays 6:30-8pm  
Leaders: Jason & Trish Weron  
**Gig Harbor/Downtown**  
Wednesdays 6:30-8pm  
Leaders: Tom & Christine Bender  
**Tacoma**  
Wednesdays 6:30-8pm  
Leaders: Peter & Betsy Smith  
**Gig Harbor**  
Thursdays 7:00-8:30pm  
Leaders: Kurt & Revell Mach  
**Olalla**  
Thursdays 6:30-8pm  
Leaders: Tom and Laurel Fisher



## Anniversaries & Birthdays

5-Donna Jaber  
*6-Scott & Gretchen Costanzo, 1989*  
8-Darrel Becker  
9-Michelle Breed  
11-Charlie Gibson  
12-Ken Shadbolt  
13-Candice Bernadelli  
*13-Steve & Rachel Beansom, 1983*

14-Judah Fuqua  
15-Haylee Miller  
16-Bill Bohlinger  
17-Gina Amon  
*17-Sean & Heather Leacy, 2008*  
18-Ethan Schroeder  
23-Russell Miller  
*30-Ashley & Becky Field, 1992*