

# CONNECTION POINT

AUGUST 2025

CONNECT, ALIGN, LIVE

WE ARE COMMITTED TO FOLLOWING GOD TOGETHER  
CONNECTED WITH HIM, COMMITTED TO EACH OTHER  
AND PARTICIPATING IN HIS LIFE TOGETHER

## Links

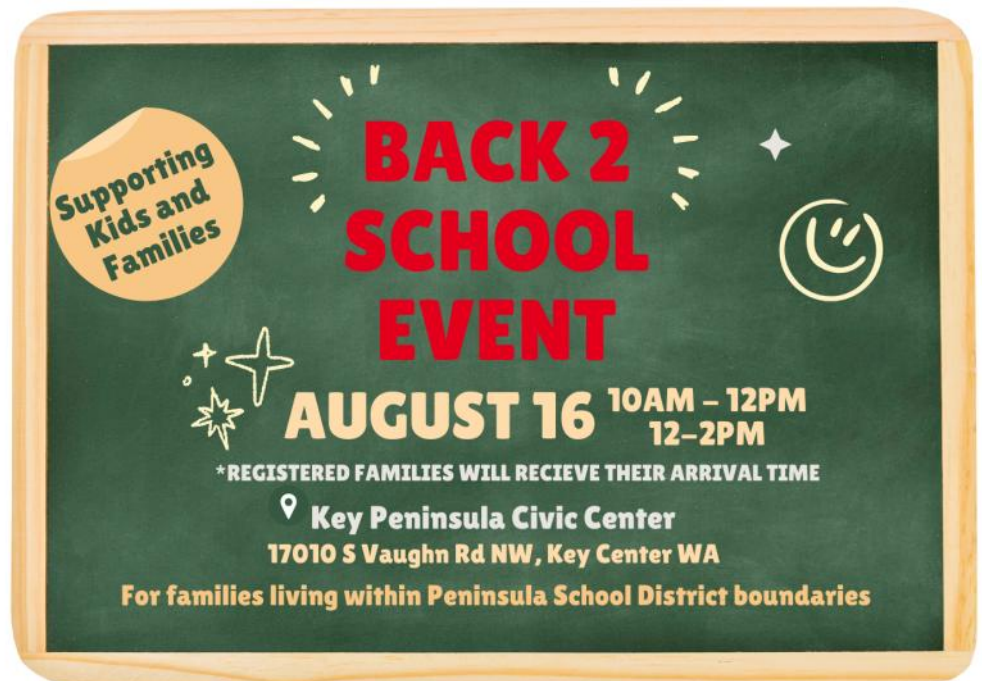
Website

YouTube



## In This Issue

<u>Summer Reading</u> .....	pages 2
<u>Events and Info</u> .....	page 1,3-6
<u>Calendar</u> .....	page 7



For more information call Food Backpacks 4 Kids at 253-857-7401



September 7th, 2025 is this years Race for Soldier event. We hope to gather a team to man a water station again this year. Sign ups for the event will finalize this month. If you are interested in participating in the actual race, we are looking into registering a team as well this year. If you have any questions about the event, feel free to look into their website or reach out to the church office:  
<https://runsignup.com/Race/WA/GigHarbor/BlueForASoldier>

Peninsula Christian Fellowship  
253-851-9972

[3114 45th St Ct, Gig Harbor WA 98335](https://www.welcometopcf.org)  
[www.welcometopcf.org](https://www.welcometopcf.org)



# CONNECTION POINT

AUGUST 2025

CONNECT, ALIGN, LIVE

## *Summer Reading*

*Summer reading is a well known term I don't think is unique to students with more time available when school is out. I can easily spend more time reading than other more laborious pursuits any time of year. I remember telling my first grandson when he was a second grader, someone who can read can learn anything. I read once that someone who can't read is no worse off than someone who doesn't.*

*But summer reading implies leisure; something pleasurable we choose to do when nothing is required of us. I enjoy reading police & detective novels. I like stories about lawyers too. There's a series about a Seattle lawyer I particularly enjoy because I grew up there. I think I've read everything John Grisham has ever written, not only his stories about attorneys.*

*I like history, both factual and fiction. I've read most of what James Michener wrote; great stories of historical fiction. There are many excellent works of faith based fiction written by Brock & Bodie Thoene, some of it centered on historical reality.*

*I enjoy good biographies about well known people. Would you like to know the truth about John D. Rockefeller? Read "Titan" by Ron Chernow. You may be surprised how different it is from the ignorant myths told about the man. I've read many books about Winston Churchill and President Harry S. Truman, the best being "Truman" by David McCullough. I've read that one more than once. "The Last Lion" by William Manchester is a three volume account of Churchill's life that will hold your interest for 1,200-1,800 pages, depending on whether you read it hard bound or paper back. Probably the most influential man of the 20<sup>th</sup> Century.*

*I once discovered a wealth of letters my father had written to my mother during WWII, when he was away at war. I was astounded by the artistry he displayed in what he wrote and how he wrote it. I had never imagined him writing with such artistic expression. Writing can express far beyond what is often evident in conversation or teaching. Read good writers and you are liable to be impacted more than you anticipated.*

*I expect to read some good books this summer. I'm enjoying a few right now. I encourage you to read God's book of love to you with fresh anticipation of what the Infinite One, the One who IS love continues to reveal to those who listen to Him. He wants us to receive and understand more of His loving destiny for us. Please don't read what He has given us as a text book. He hasn't created us to study Him, but to know Him. He wants us to know Him well enough to be absolutely confident in who He is, and who He is toward us; you & me, and us.*

*We're not studying for a test. There is no entrance exam to heaven. We have been invited to walk through life with the One who IS Life, learning how to live well with the One who created us for it.*



Peninsula Christian Fellowship  
253-851-9972

[3114 45th St Ct, Gig Harbor WA 98335](http://3114_45th_St_Ct_Gig_Harbor_WA_98335)  
[www.welcometopcf.org](http://www.welcometopcf.org)



# CONNECTION POINT

AUGUST 2025

CONNECT, ALIGN, LIVE



## Church BYOL Picnics and Outdoor Game Times

During the first Sunday of the month for August we will have a “bring your own lunch” (BYOL) Picnic. The fridge and kitchen will be available to store items during service if need be. Or feel free to go grab something and then come enjoy it outdoors with us and some fun group games.

PCF has a plethora of yard games for the summer and we want to enjoy this beautiful property with more outdoor time. So, after church on the first Sunday of each month and during our monthly potlucks, depending upon weather, we plan to have yard games available outside! We have Tumble Tetris, Jenga, volleyball, cornhole, Connect Four, and pickleball. Join us for some yard game fun!



There will be a potluck meal on Sunday August 17th after service. This month's theme is: BBQ sides. PCF will provide the plates, utensils, water and hamburgers, hot dogs and birthday cake! Bring a BBQ side and join us in celebrating PCF turning 49 on August 22nd! Looking forward to celebrating together!



Join us for a  
work party on  
Saturday  
August 9th from  
9am to noon.  
Bring gloves  
and come help us keep things  
looking nice!



6-Fred Breed  
9-Trisha Weron  
12-Nathaniel Pierson  
12-Laura Siemens  
13-Paul Kammerzell

17-Andy & Mary Bothwell, 2013  
19-Fred & Michelle Breed, 1995  
21-Andrew Burt  
22-Mitch and Donna Jaber, 1981  
28-Jerry Siemens

Peninsula Christian Fellowship  
253-851-9972

[3114 45th St Ct, Gig Harbor WA 98335](http://3114.45th.St.Ct.,Gig.Harbor.WA.98335)  
[www.welcometopcf.org](http://www.welcometopcf.org)



# CONNECTION POINT

AUGUST 2025

CONNECT, ALIGN, LIVE

# connect

Would you like to get to know a bit more about Peninsula Christian Fellowship? Do you want to become a PCF member? Sign up for a **Connect Meet Up**. This 30-60 minute get together can be however you'd like it to be. Would you like to meet with one of the pastors after church? Would you like to go out to coffee with one of them and go over who we are as a church or even do so over dinner? The material is available on our website at [welcometopcf.org](http://welcometopcf.org) under the "About Us" tab by clicking "Church Membership." We have the material presented in the video on the page and the printable version under the "Our Essential Beliefs" link. We'd love to have you call PCF your church home. Let us know who you are and to welcome you to PCF!!

We're glad you are here and we look forward to knowing you better.

To sign up, fill out the **Connect Meet Up** form online on the main page or fill out the form on the information table and place it in the box outside the church office.



Scan the QR code and join  
PCF's text alerts!

You can also send us prayer  
requests or ask questions  
about upcoming events!

Text Number:  
833-237-9238



Peninsula Christian Fellowship  
253-851-9972

3114 45th St Ct, Gig Harbor WA 98335  
[www.welcometopcf.org](http://www.welcometopcf.org)



# CONNECTION POINT

AUGUST 2025

CONNECT, ALIGN, LIVE



## **PCF Women's Prayer Group**

Contact Diane 253-970-1568 or [markdianewife@hotmail.com](mailto:markdianewife@hotmail.com) for additional information.

The group will be on break until September.



## **PCF Soulfire Youth Summer Events**

August 3 - Water Fight  
August 29th or 30th -  
Movie Marathon or Zoo

-----

The first Sunday of August are BYOL (bring your own lunch) and we will have out all the outdoor yard games. Oh, and a water fight!

August 17 will be a potluck and outdoor yard games.

We may add additional events, make sure Charles has your contact information if we add some new dates!

**Calvary Youth Wednesdays:**  
**No Calvary Wednesday Nights in August**



Join us for our monthly group hikes this summer. For August we will be hiking on Saturday August 16th at 10am on the Spruce Railroad Trail in Port Angeles. The hike will take us into lunch time, so bring yourself a sack lunch. If the weather is warm, there may even be swimming opportunities, so consider bringing a towels and swimming clothes as well..

For more information about the area click below:

<https://www.wta.org/go-hiking/hikes/spruce-railroad>

The trail follows along Lake Crescent . There are a few route options for the hike that will be determined by those attending. See April Wilder for details. This one is a bit of a drive, so feel free to consider carpooling.



We are going to be partnering with a ministry called Child Evangelism Fellowship and their teens, to provide our kids with an action packed time full of songs, high energy games, an exciting Bible lesson, and an unforgettable missionary story. Christian Youth in Action teens are missionaries in training that have been taught how to lead clubs, teach Bible lessons, songs, memory verses, and missionary stories. This event is for kids ages

5-12 years old. It is FREE of charge and we highly encourage kids to invite their friends! This summer's 5-Day Club will be August 11th-15th at PCF. Find more information about Child Evangelism Fellowship by using the register link. Grab fliers in the entry way and hand some out today!

[REGISTER HERE](#)

**Peninsula Christian Fellowship**  
253-851-9972

[3114 45th St Ct, Gig Harbor WA 98335](mailto:3114.45th.St.Ct.Gig.Harbor.WA.98335)  
[www.welcometopcf.org](http://www.welcometopcf.org)



# CONNECTION POINT

AUGUST 2025

CONNECT, ALIGN, LIVE



**Many groups are beginning their summer schedules. Be sure to check in with the groups leader to verify where and when they are meeting!**

## Key Peninsula/Port Orchard

Leaders: Jason & Trisha Weron

**Tuesday 6:30-8:00pm**

**Meeting @ Eric and Wendy Pierson's**

Contact Trisha Weron: 253-514-0696

## Tacoma

Leaders: Peter & Betsy Smith

**Tuesdays 6:30-8pm**

**Meeting - location varies**

Contact Peter Smith: 253-732-6018

## Gig Harbor

Leaders: Ted and Diane Wilder

**Thursday 6:30-8pm**

**Meeting - location varies**

Contact Ted Wilder: 253-225-0487

## Gig Harbor

Leaders: Trisha Weron and Peter Smith

**Wednesday 6:30-8pm**

**Meeting - PCF Coffee Corner**

Contact Trisha Weron: 253-514-0696



## FINANCIAL RECAP

Monthly Budget	\$16,163.00
June as of 7/30/25	\$12,704.50
+ or (-) Budget	(\$3,458.50)
<b>Total Budget Year to Date</b>	<b>\$113,141.00</b>
Actual Income to Date	\$107,693.27
+ or (-) Total Budget Year Income	(\$5,447.73)



Are you between the ages of 18 and 28? You're welcome to join THRIVE.

They meet Thursdays at 6:45PM in the PCF Sanctuary for a snack, worship, a message, and discussion groups! For more information about

Thrive go to their website: [www.thriveharbor.com](http://www.thriveharbor.com)






Tithes and offerings can be given at church, by mail or online. At church place your tithes and offerings in the box outside of the church office.

For online giving; go to the website and scroll down to the "Donate Now" button to give through the Tithe.ly app.

Peninsula Christian Fellowship  
253-851-9972

3114 45th St Ct, Gig Harbor WA 98335  
[www.welcometopcf.org](http://www.welcometopcf.org)

# August 2025

Sunday	Monday	Tuesday	Wednesday	Thursday	Friday	Saturday
					1	2
3 9am Calvary Worship Service 11am PCF Worship Service BYOL Picnic Youth Water Fight!	4	5 PCF Office Hours  <b>Life Groups</b>	6 PCF Office Hours	7 <b>Life Groups</b>  645pm <i>Thrive @ PCF</i>	8	9 9am Work Party
10 9am Calvary Worship Service 11am PCF Worship Service	11 	12 PCF Office Hours  <b>Life Groups</b>	13 PCF Office Hours  <b>Life Group @PCF</b>	14 <b>Life Groups</b>  645pm <i>Thrive @ PCF</i>	15	16 10am "Let's Go Hiking"  
17 9am Calvary Worship Service 11am PCF Worship Service Youth Group Games MEAL POTLUCK	18	19 PCF Office Hours  <b>Life Groups</b>	20 PCF Office Hours	21 <b>Life Groups</b>  645pm <i>Thrive @ PCF</i>	22 PCF Birthday!  	23
24 9am Calvary Worship Service 11am PCF Worship Service  Post Service Prayer Time SMB	25	26 PCF Office Hours  <b>Life Groups</b>	27 PCF Office Hours  <b>Life Group @PCF</b>	28 <b>Life Groups</b>  645pm <i>Thrive @ PCF</i>	29	30 Youth Group Event
31 9am Calvary Worship Service 11am PCF Worship Service	<div data-bbox="696 1621 956 2009" data-label="Image"> </div> <div data-bbox="992 1627 1515 2001" data-label="Text"> <p>Do you have a need we can help with?  Email the office:  <a href="mailto:office@welcometopcf.org">office@welcometopcf.org</a>  Or the deacons:  <a href="mailto:deacons@welcometopcf.org">deacons@welcometopcf.org</a>  Or the elders:  <a href="mailto:elders@welcometopcf.org">elders@welcometopcf.org</a>  Or the pastors:  <a href="mailto:kmach@welcometopcf.org">kmach@welcometopcf.org</a>  <a href="mailto:cwilder@welcometopcf.org">cwilder@welcometopcf.org</a>  <a href="mailto:psmith@welcometopcf.org">psmith@welcometopcf.org</a></p> </div>					